

Selection and ordering data

AC operation

PU (UNIT, SET, M) = 1
 PS* = 1 unit
 PG = 101



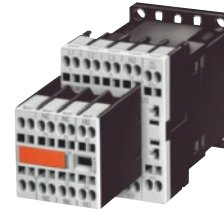
3RT10 1.-1A...



3RT10 1.-2A...



3RT10 1.-1AP04-3MA0



3RT10 1.-2AP04-3MA0

Rated data		Auxiliary contacts		Rated control supply voltage U_s at 50/60 Hz	DT	Screw terminals		Weight per PU approx.	DT	Cage Clamp terminals		Weight per PU approx.
AC-2 and AC-3, T_U : Up to 60 °C	AC-1, T_U : 40 °C	Operational current I_e up to	Rating of induction motors at 50 Hz and			Ident. No.	Version			Order No.	Price per PU	
400 V	400 V	A	kW	NO NC V AC				kg			kg	

For screw and snap-on mounting onto TH 35 standard mounting rail

Size S00¹⁾

Terminal designations according to EN 50012

7	3	18	10 E	1 --	24	▶	3RT10 15-1AB01	0.200	▶	3RT10 15-2AB01	0.200
					110	▶	3RT10 15-1AF01	0.200	▶	3RT10 15-2AF01	0.200
					230	▶	3RT10 15-1AP01	0.200	▶	3RT10 15-2AP01	0.200
			01	-- 1	24	▶	3RT10 15-1AB02	0.200	▶	3RT10 15-2AB02	0.200
					110	▶	3RT10 15-1AF02	0.200	▶	3RT10 15-2AF02	0.200
					230	▶	3RT10 15-1AP02	0.200	▶	3RT10 15-2AP02	0.200
9	4	22	10 E	1 --	24	▶	3RT10 16-1AB01	0.200	▶	3RT10 16-2AB01	0.200
					110	▶	3RT10 16-1AF01	0.200	▶	3RT10 16-2AF01	0.200
					230	▶	3RT10 16-1AP01	0.200	▶	3RT10 16-2AP01	0.200
			01	-- 1	24	▶	3RT10 16-1AB02	0.200	▶	3RT10 16-2AB02	0.200
					110	▶	3RT10 16-1AF02	0.200	▶	3RT10 16-2AF02	0.200
					230	▶	3RT10 16-1AP02	0.200	▶	3RT10 16-2AP02	0.200
12	5.5	22	10 E	1 --	24	▶	3RT10 17-1AB01	0.200	▶	3RT10 17-2AB01	0.200
					110	▶	3RT10 17-1AF01	0.200	▶	3RT10 17-2AF01	0.200
					230	▶	3RT10 17-1AP01	0.200	▶	3RT10 17-2AP01	0.200
			01	-- 1	24	▶	3RT10 17-1AB02	0.200 B	▶	3RT10 17-2AB02	0.200
					110	▶	3RT10 17-1AF02	0.200	▶	3RT10 17-2AF02	0.200
					230	▶	3RT10 17-1AP02	0.200	▶	3RT10 17-2AP02	0.200

Size S00¹⁾

With permanently mounted auxiliary switch block for safety applications according to SUVA

Terminal designations according to EN 50012

7	3	18	22 E	2 2	230	▶	3RT10 15-1AP04-3MA0	0.250 B	▶	3RT10 15-2AP04-3MA0	0.250
9	4	22	22 E	2 2	230	▶	3RT10 16-1AP04-3MA0	0.250 B	▶	3RT10 16-2AP04-3MA0	0.250
12	5.5	22	22 E	2 2	230	▶	3RT10 17-1AP04-3MA0	0.250 B	▶	3RT10 17-2AP04-3MA0	0.250

For other voltages see page 3/26, for contactors with permanently mounted auxiliary switch block please inquire.

For accessories, see page 3/102.

For multi-unit packing and reusable packaging, see "Appendix" → "Ordering notes".

¹⁾ For size S00: Coil operating range
 at 50 Hz: 0.8 ... 1.1 × U_s
 at 60 Hz: 0.85 ... 1.1 × U_s .

3RT, 3TB, 3TF Contactors for Switching Motors

3RT10 contactors, 3-pole, 3 ... 250 kW

AC operation

PU (UNIT, SET, M)= 1
 PS* = 1 unit
 PG = 101



3RT10 2.-1A.00



3RT10 2.-3A.00



3RT10 2.-1A.04



3RT10 2.-1AL24-3MA0

Rated data		Auxiliary contacts		Rated control supply voltage U_s at 50 Hz	DT	Screw terminals		Weight per PU approx.	DT	Cage Clamp terminals		Weight per PU approx.
AC-2 and AC-3, T_U : Up to 60 °C	AC-1, T_U : 40 °C	Operational current I_e up to	Operational current I_e up to			Ident. No.	Version			⊕	⊙	
400 V	400 V	690 V				Order No.	Price per PU			Order No.	Price per PU	
A	kW	A						kg				kg

For screw and snap-on mounting onto TH 35 standard mounting rail

Size S0

9	4	40 ¹⁾	--	--	--	24	▶ 3RT10 23-1AB00	0.350 B	▶ 3RT10 23-3AB00	0.350	
							▶ 3RT10 23-1AF00				▶ 3RT10 23-3AF00
							▶ 3RT10 23-1AP00				▶ 3RT10 23-3AP00
12	5.5	40 ¹⁾	--	--	--	24	▶ 3RT10 24-1AB00	0.350 B	▶ 3RT10 24-3AB00	0.350	
							▶ 3RT10 24-1AF00				▶ 3RT10 24-3AF00
							▶ 3RT10 24-1AP00				▶ 3RT10 24-3AP00
17	7.5	40 ¹⁾	--	--	--	24	▶ 3RT10 25-1AB00	0.350 B	▶ 3RT10 25-3AB00	0.350	
							▶ 3RT10 25-1AF00				▶ 3RT10 25-3AF00
							▶ 3RT10 25-1AP00				▶ 3RT10 25-3AP00
25	11	40 ¹⁾	--	--	--	24	▶ 3RT10 26-1AB00	0.350 B	▶ 3RT10 26-3AB00	0.350	
							▶ 3RT10 26-1AF00				▶ 3RT10 26-3AF00
							▶ 3RT10 26-1AP00				▶ 3RT10 26-3AP00

Size S0

With mounted auxiliary switch block (removable)²⁾

Terminal designations according to EN 50012

9	4	40 ¹⁾	22 E	2	2	24	▶ 3RT10 23-1AB04	0.400	--	--	
							▶ 3RT10 23-1AF04				0.400
							▶ 3RT10 23-1AP04				
12	5.5	40 ¹⁾	22 E	2	2	24	▶ 3RT10 24-1AB04	0.400	--	--	
							▶ 3RT10 24-1AF04				0.400
							▶ 3RT10 24-1AP04				
17	7.5	40 ¹⁾	22 E	2	2	24	▶ 3RT10 25-1AB04	0.400	--	--	
							▶ 3RT10 25-1AF04				0.400
							▶ 3RT10 25-1AP04				
25	11	40 ¹⁾	22 E	2	2	24	▶ 3RT10 26-1AB04	0.400	--	--	
							▶ 3RT10 26-1AF04				0.400
							▶ 3RT10 26-1AP04				

Size S0

With permanently mounted auxiliary switch block for safety applications according to SUVA

At 50/60 Hz
V AC

Terminal designations according to EN 50012

12	5.5	40 ¹⁾	22 E	2	2	230	B	3RT10 24-1AL24-3MA0	0.420	--
17	7.5	40 ¹⁾	22 E	2	2	230	A	3RT10 25-1AL24-3MA0	0.420	--
25	11	40 ¹⁾	22 E	2	2	230	A	3RT10 26-1AL24-3MA0	0.420	--

For other voltages see page 3/26, for contactors with permanently mounted auxiliary switch block please inquire.

For accessories, see page 3/103.

For spare parts, see page 3/115.

For multi-unit packing and reusable packaging, see "Appendix" → "Ordering notes".

¹⁾ Minimum conductor cross-section 10 mm².

²⁾ Order No. for the auxiliary switch block (removable): 3RH19 21-1HA22 (2NO + 2NC according to EN 50012; 22E).

3RT, 3TB, 3TF Contactors for Switching Motors

3RT10 contactors, 3-pole, 3 ... 250 kW

DC operation - DC solenoid system

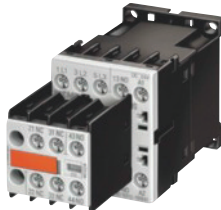
PU (UNIT, SET, M)= 1
 PS* = 1 unit
 PG = 101



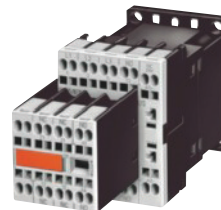
3RT10 1.-1B...



3RT10 1.-2B...



3RT10 1.-1BB44-3MA0



3RT10 1.-2BB44-3MA0

Rated data		Auxiliary contacts		Rated control supply voltage U_s	DT	Screw terminals	Weight per PU approx.	DT	Cage Clamp terminals	Weight per PU approx.
AC-2 and AC-3, T_U : Up to 60 °C	AC-1, T_U : 40 °C	Ident. No.	Version			⊕			⊕	
Operational current I_e up to	Rating of induction motors at 50 Hz and					Order No.	Price per PU		Order No.	Price per PU
400 V	400 V									
A	kW	A	NO NC V DC				kg			kg

For screw and snap-on mounting onto TH 35 standard mounting rail

Size S00

Terminal designations according to EN 50012

7	3	18	10 E	1	--	24	▶	3RT10 15-1BB41	0.260	▶	3RT10 15-2BB41	0.260
						220	A	3RT10 15-1BM41	0.260	B	3RT10 15-2BM41	0.260
			01	--	1	24	▶	3RT10 15-1BB42	0.260	▶	3RT10 15-2BB42	0.260
						220	B	3RT10 15-1BM42	0.260	B	3RT10 15-2BM42	0.260
9	4	22	10 E	1	--	24	▶	3RT10 16-1BB41	0.260	▶	3RT10 16-2BB41	0.260
						220	B	3RT10 16-1BM41	0.260	B	3RT10 16-2BM41	0.260
			01	--	1	24	▶	3RT10 16-1BB42	0.260	▶	3RT10 16-2BB42	0.260
						220	B	3RT10 16-1BM42	0.260	B	3RT10 16-2BM42	0.260
12	5.5	22	10 E	1	--	24	▶	3RT10 17-1BB41	0.260	▶	3RT10 17-2BB41	0.260
						220	B	3RT10 17-1BM41	0.260	B	3RT10 17-2BM41	0.260
			01	--	1	24	▶	3RT10 17-1BB42	0.260	▶	3RT10 17-2BB42	0.260
						220	B	3RT10 17-1BM42	0.260	B	3RT10 17-2BM42	0.260

Size S00

With permanently mounted auxiliary switch block for safety applications according to SUVA

Terminal designations according to EN 50012

7	3	18	22 E	2	2	24	▶	3RT10 15-1BB44-3MA0	0.300	B	3RT10 15-2BB44-3MA0	0.300
9	4	22	22 E	2	2	24	▶	3RT10 16-1BB44-3MA0	0.300	A	3RT10 16-2BB44-3MA0	0.300
12	5.5	22	22 E	2	2	24	▶	3RT10 17-1BB44-3MA0	0.300	B	3RT10 17-2BB44-3MA0	0.300

For other voltages see page 3/26, for contactors with permanently mounted auxiliary switch block please inquire.

For accessories, see page 3/102.

For multi-unit packing and reusable packaging, see "Appendix" → "Ordering notes"

* You can order this quantity or a multiple thereof.



3RT, 3TB, 3TF Contactors for Switching Motors

3RT10 contactors, 3-pole, 3 ... 250 kW

DC operation · DC solenoid system

PU (UNIT, SET, M)= 1
 PS* = 1 unit
 PG = 101



3RT10 2.-1B.40



3RT10 2.-3B.40



3RT10 2.-3B.44



3RT10 2.-1BB44-3MA0

Rated data		Auxiliary contacts	Rated control supply voltage U_s	DT	Screw terminals	Weight per PU approx.	DT	Cage Clamp terminals for coil terminals	Weight per PU approx.
AC-2 and AC-3, T_U : Up to 60 °C	AC-1, T_U : 40 °C	Ident. No.	Version		⊕			⊗	
Operational current I_e up to	Rating of induction motors at 50 Hz and				Order No.	Price per PU		Order No.	Price per PU
400 V	400 V								
A	kW	A	NO NC V DC			kg			kg

For screw and snap-on mounting onto TH 35 standard mounting rail

Size S0

9	4	40 ¹⁾	--	--	24	▶	3RT10 23-1BB40	0.580	▶	3RT10 23-3BB40	0.580
					220	B	3RT10 23-1BM40	0.580	B	3RT10 23-3BM40	0.580
12	5.5	40 ¹⁾	--	--	24	▶	3RT10 24-1BB40	0.580	▶	3RT10 24-3BB40	0.580
					220	A	3RT10 24-1BM40	0.580	B	3RT10 24-3BM40	0.580
17	7.5	40 ¹⁾	--	--	24	▶	3RT10 25-1BB40	0.580	▶	3RT10 25-3BB40	0.580
					220	A	3RT10 25-1BM40	0.580	B	3RT10 25-3BM40	0.580
25	11	40 ¹⁾	--	--	24	▶	3RT10 26-1BB40	0.580	▶	3RT10 26-3BB40	0.580
					220	A	3RT10 26-1BM40	0.580	B	3RT10 26-3BM40	0.580

Size S0

With mounted auxiliary switch block (removable)²⁾

Terminal designations according to DIN 50012

9	4	40 ¹⁾	22 E	2	2	24	▶	3RT10 23-1BB44	0.650	--	
						220	B	3RT10 23-1BM44	0.650	--	
12	5.5	40 ¹⁾	22 E	2	2	24	▶	3RT10 24-1BB44	0.650	--	
						220	B	3RT10 24-1BM44	0.650	--	
17	7.5	40 ¹⁾	22 E	2	2	24	▶	3RT10 25-1BB44	0.650	--	
						220	B	3RT10 25-1BM44	0.650	--	
25	11	40 ¹⁾	22 E	2	2	24	▶	3RT10 26-1BB44	0.650	--	
						220	B	3RT10 26-1BM44	0.650	--	

Size S0

With permanently mounted auxiliary switch block

for safety applications according to SUVA

Terminal designations according to DIN 50012

12	5.5	40 ¹⁾	22 E	2	2	24	A	3RT10 24-1BB44-3MA0	0.650	--	
17	7.5	40 ¹⁾	22 E	2	2	24	A	3RT10 25-1BB44-3MA0	0.650	--	
25	11	40 ¹⁾	22 E	2	2	24	A	3RT10 26-1BB44-3MA0	0.650	--	

For other voltages see page 3/26, for contactors with mounted auxiliary switch block please inquire.

For accessories, see page 3/103.

For multi-unit packing and reusable packaging, see "Appendix" → "Ordering notes".

¹⁾ Minimum conductor cross-section 10 mm².

²⁾ Order No. for the auxiliary switch block (removable): 3RH19 21-1HA22 (2 NO + 2 NC according to EN 50012; 22E).