

# 3RT, 3TB, 3TF Contactors for Switching Motors

## 3RT10 contactors, 3-pole, 3 ... 250 kW

### Selection and ordering data

#### AC operation

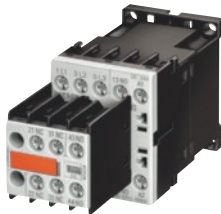
PU (UNIT, SET, M) = 1  
 PS\* = 1 unit  
 PG = 101



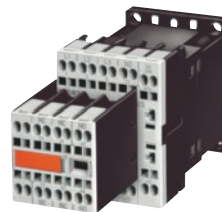
3RT10 1.-1A...



3RT10 1.-2A...



3RT10 1.-1AP04-3MA0



3RT10 1.-2AP04-3MA0

Rated data		Auxiliary contacts		Rated control supply voltage $U_s$ at 50/60 Hz	DT	Screw terminals		Weight per PU approx.	DT	Cage Clamp terminals		Weight per PU approx.
AC-2 and AC-3, $T_U$ : up to 60 °C	AC-1, $T_U$ : 40 °C	Operational current $I_e$ up to	Rating of induction motors at 50 Hz and			Ident. No.	Version			Order No.	Price per PU	
400 V	400 V	690 V										
A	kW	A						kg				kg

#### For screw and snap-on mounting onto 35 mm standard mounting rail

#### Size S00<sup>1)</sup>

Terminal designations according to EN 50012

7	3	18	10 E	1	--	24	▶	3RT10 15-1AB01	0.200	▶	3RT10 15-2AB01	0.200
						110	▶	3RT10 15-1AF01	0.200	▶	3RT10 15-2AF01	0.200
						230	▶	3RT10 15-1AP01	0.200	▶	3RT10 15-2AP01	0.200
			01	--	1	24	▶	3RT10 15-1AB02	0.200	▶	3RT10 15-2AB02	0.200
						110	▶	3RT10 15-1AF02	0.200	▶	3RT10 15-2AF02	0.200
						230	▶	3RT10 15-1AP02	0.200	▶	3RT10 15-2AP02	0.200
9	4	22	10 E	1	--	24	▶	3RT10 16-1AB01	0.200	▶	3RT10 16-2AB01	0.200
						110	▶	3RT10 16-1AF01	0.200	▶	3RT10 16-2AF01	0.200
						230	▶	3RT10 16-1AP01	0.200	▶	3RT10 16-2AP01	0.200
			01	--	1	24	▶	3RT10 16-1AB02	0.200	▶	3RT10 16-2AB02	0.200
						110	▶	3RT10 16-1AF02	0.200	▶	3RT10 16-2AF02	0.200
						230	▶	3RT10 16-1AP02	0.200	▶	3RT10 16-2AP02	0.200
12	5.5	22	10 E	1	--	24	▶	3RT10 17-1AB01	0.200	▶	3RT10 17-2AB01	0.200
						110	▶	3RT10 17-1AF01	0.200	▶	3RT10 17-2AF01	0.200
						230	▶	3RT10 17-1AP01	0.200	▶	3RT10 17-2AP01	0.200
			01	--	1	24	▶	3RT10 17-1AB02	0.200 B	▶	3RT10 17-2AB02	0.200
						110	▶	3RT10 17-1AF02	0.200	▶	3RT10 17-2AF02	0.200
						230	▶	3RT10 17-1AP02	0.200	▶	3RT10 17-2AP02	0.200

#### Size S00<sup>1)</sup>

#### With permanently mounted auxiliary switch block for safety applications according to SUVA

Terminal designations according to EN 50012

7	3	18	22 E	2	2	230	▶	3RT10 15-1AP04-3MA0	0.250 B	▶	3RT10 15-2AP04-3MA0	0.250
9	4	22	22 E	2	2	230	▶	3RT10 16-1AP04-3MA0	0.250 B	▶	3RT10 16-2AP04-3MA0	0.250
12	5.5	22	22 E	2	2	230	▶	3RT10 17-1AP04-3MA0	0.250 B	▶	3RT10 17-2AP04-3MA0	0.250

For other voltages see page 3/26, for contactors with permanently mounted auxiliary switch block please inquire.

For accessories, see page 3/100.

For multi-unit packing and reusable packaging, see "Appendix --> Ordering notes".

1) For size S00: coil operating range  
 at 50 Hz: 0.8 ... 1,1 x  $U_s$   
 at 60 Hz: 0.85 ... 1,1 x  $U_s$ .

